

000104. Father's Day Gift Box

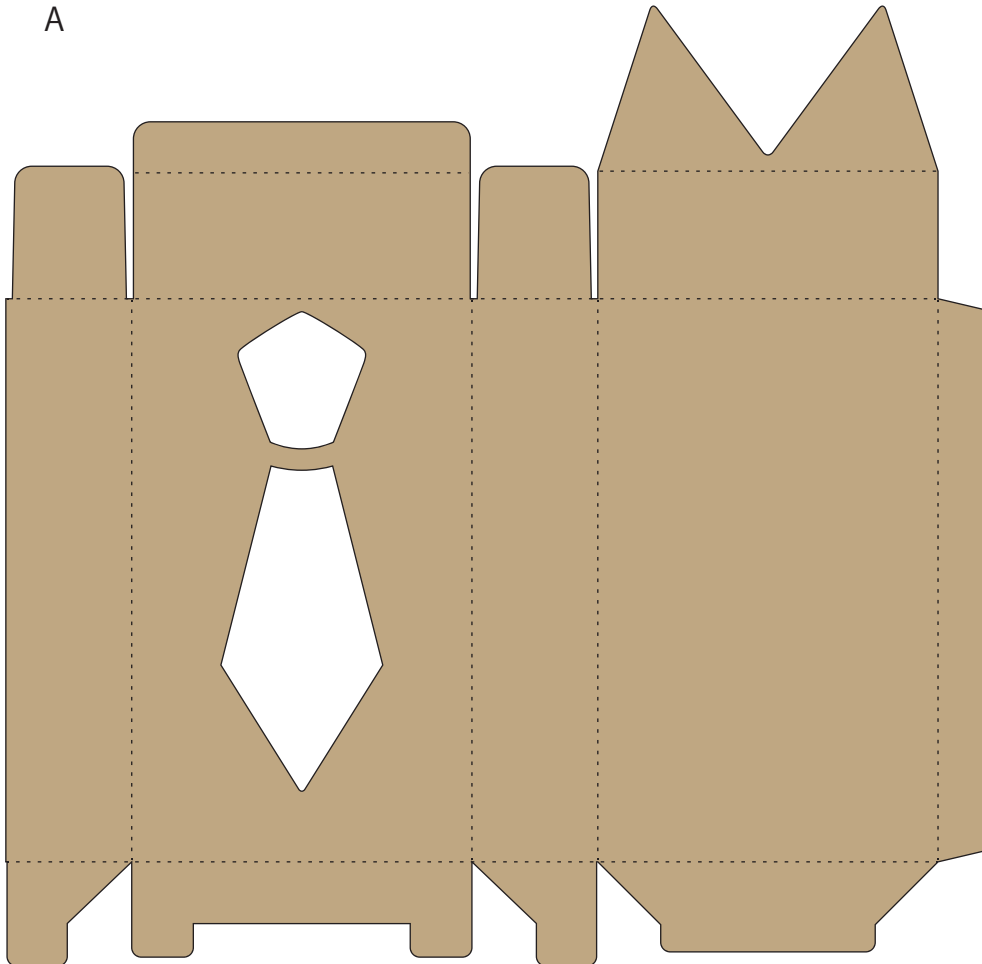


Material

Paper – 2 kinds
 Transparent sheet (0.2 mm thick)
 Button – 2 kinds (7 to 8 mm diameter)
 Glue
 Felt-tip pen

(1) Cut out the parts. Cut part B-2 from the transparent sheet.

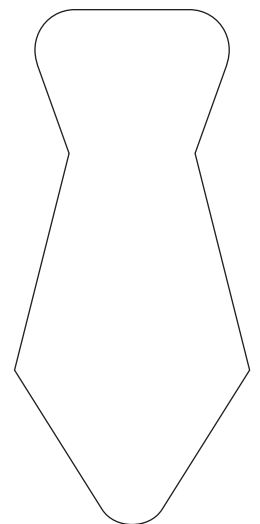
A



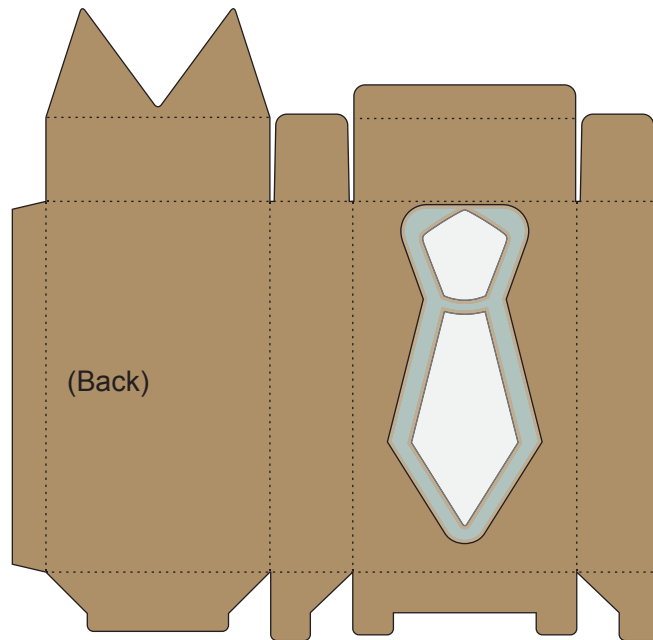
B-1



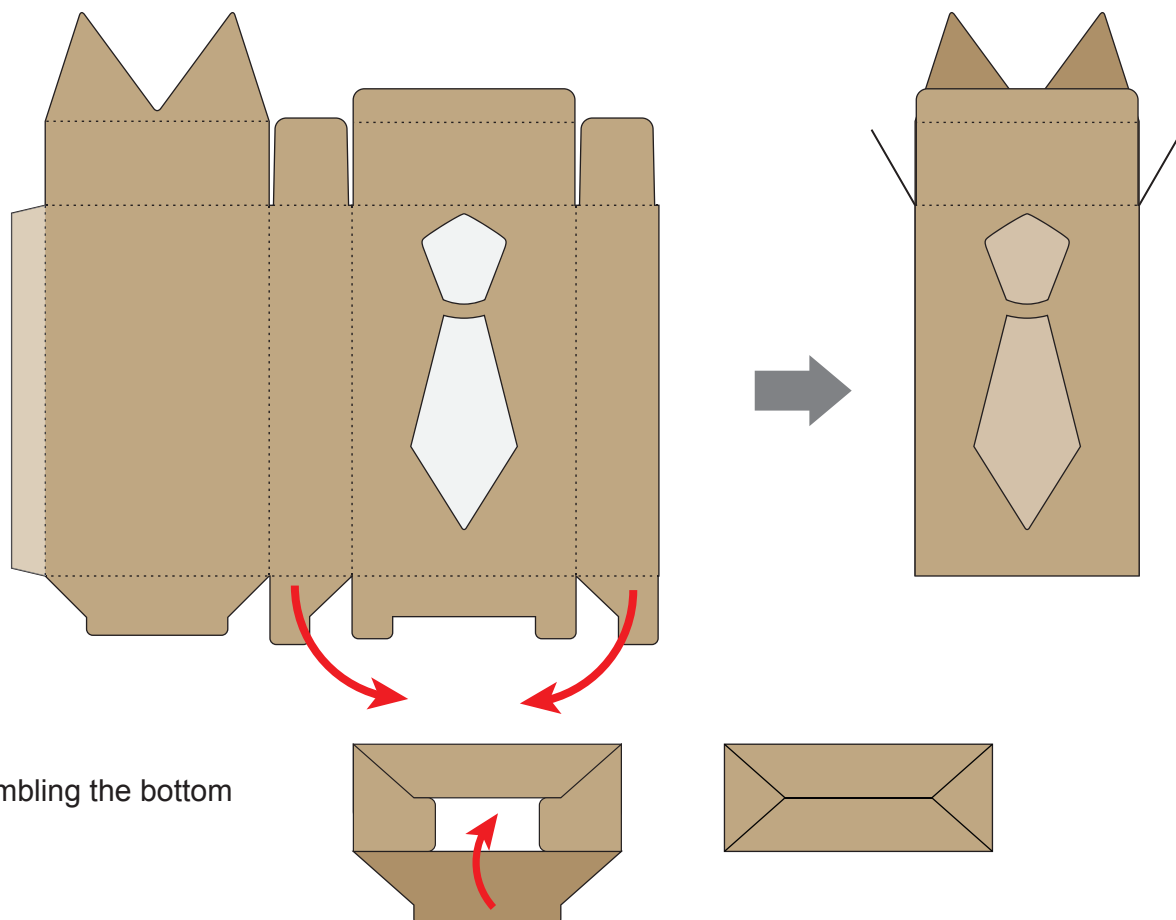
B-2



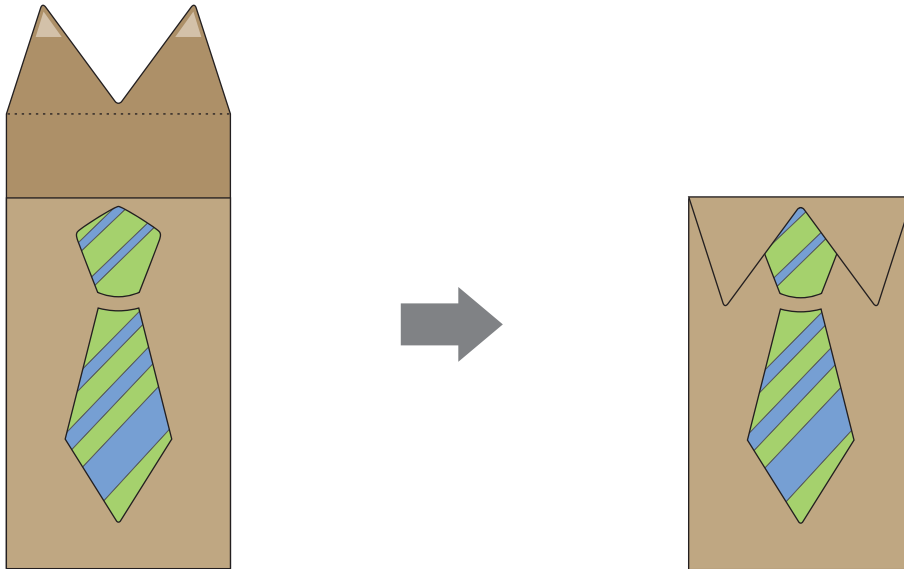
(2) From the back of part A, glue on part B-2, as shown below.



(3) Fold along the dotted lines, and then glue the tabs to form a box.



(4) Place the gift inside, close the inner lid, and then apply glue to the back of the outer lid and glue in place.



(5) Glue on the button as shown below, and then write the message on part B-1 and glue it in place.

