

000034. Stuffed Rabbit Toy

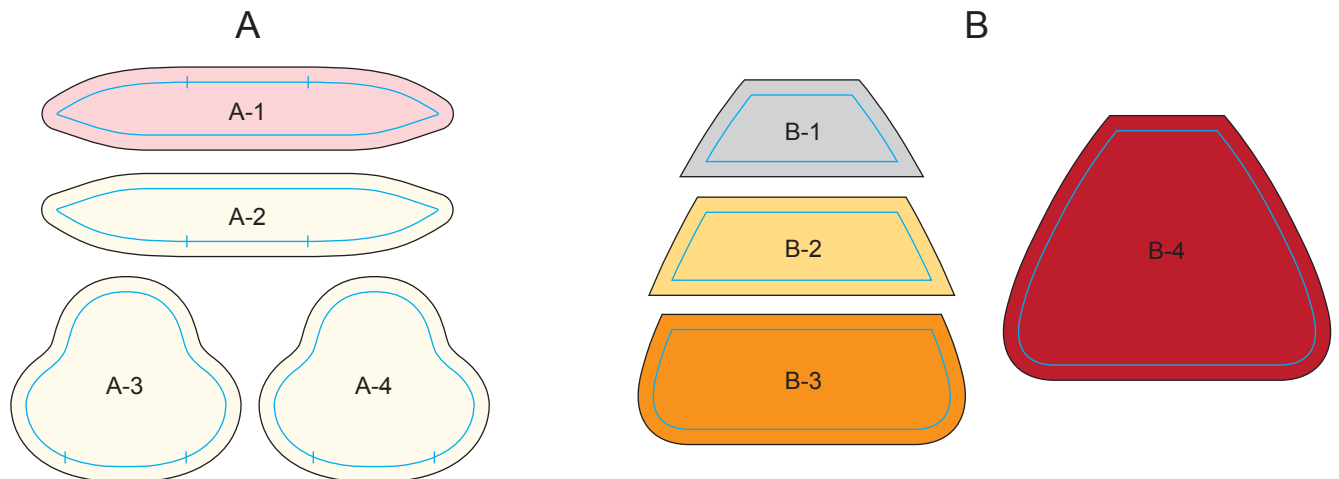


Material

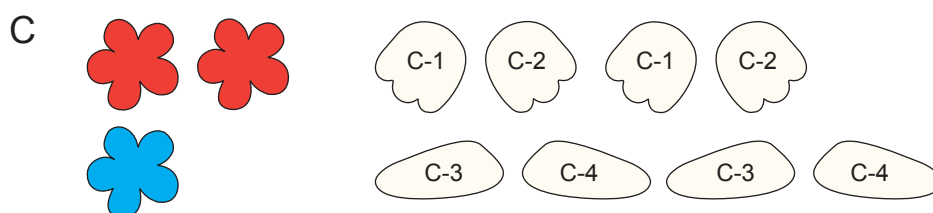
Patchwork fabric – 6 kinds
Felt – 3 kinds
High-tack adhesive fabric support sheet
Iron-on adhesive sheet
Acrylic cord (arms and legs)
Thin wire (arms, legs and flower stem)
Fiberfill
Beads
Embroidery thread, sewing machine thread and pen

(1) Attach the high-tack adhesive fabric support sheet to the standard mat. (For details on attaching the sheet, refer to the instructions included with it.)

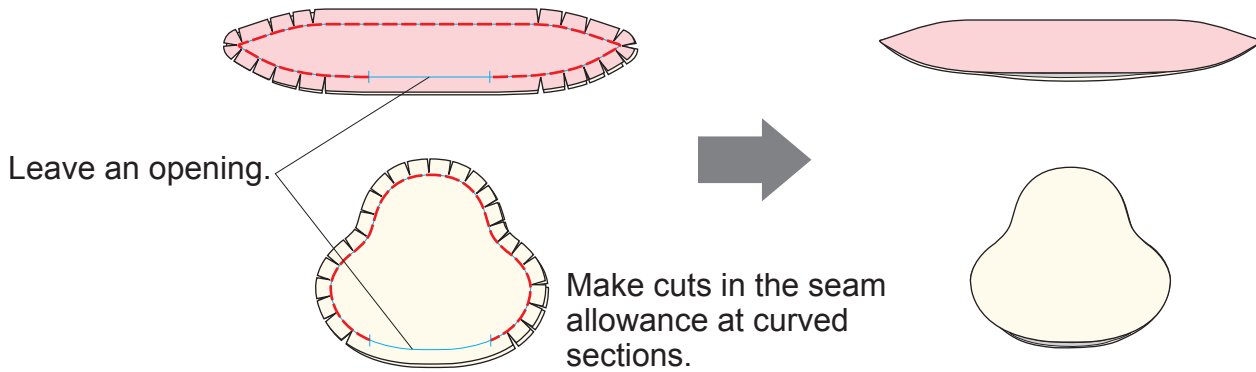
(2) With the wrong side of the fabric facing up, attach it to the support sheet, and then draw the finished lines and cut the fabric.



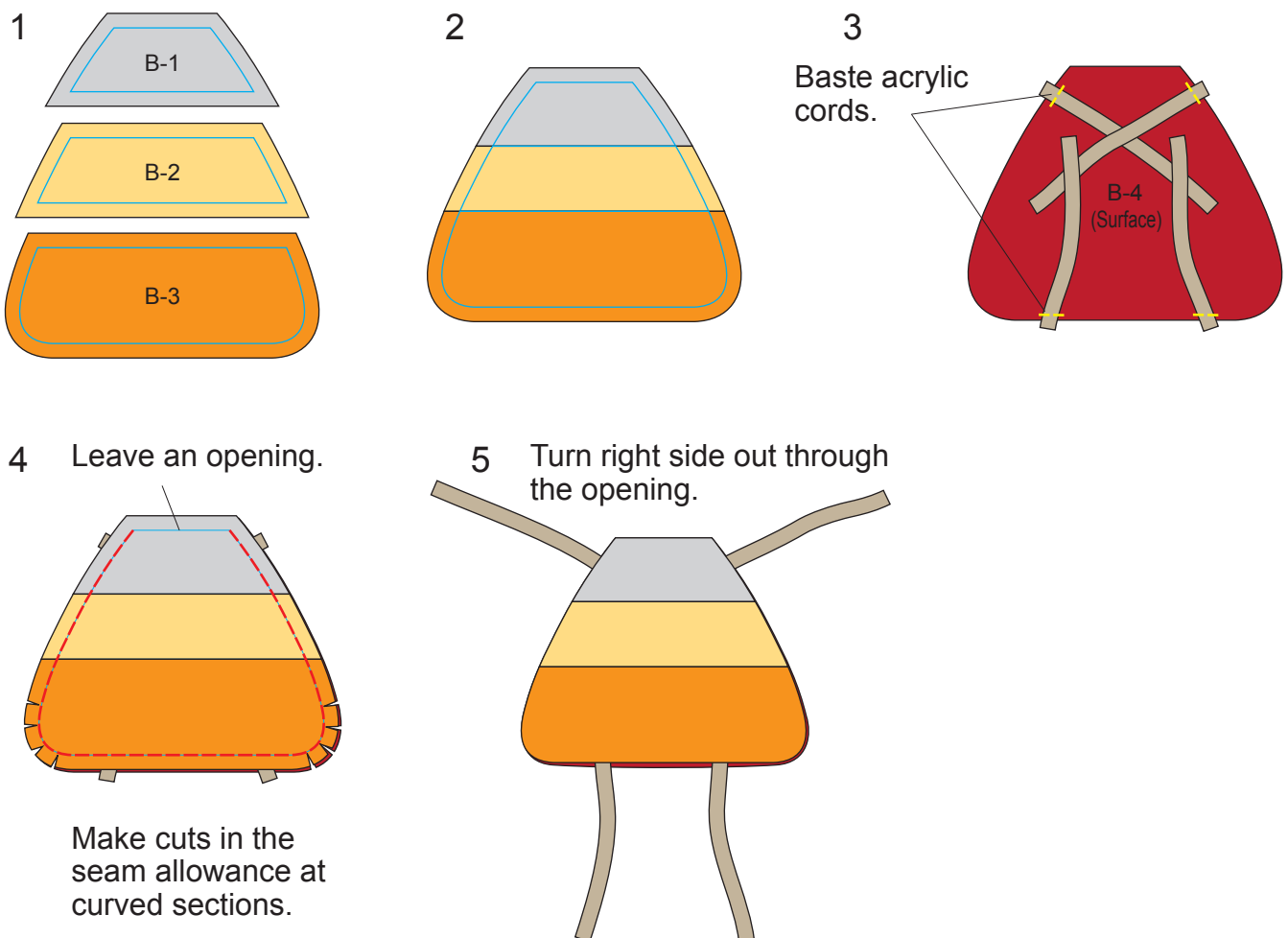
(3) Attach the iron-on adhesive sheet to the back of the felt. (For details on attaching the sheet, refer to the instructions included with it.) Cut out the parts.



(4) With their right sides together, sew together A-1 and A-2 as well as A-3 and A-4, as shown below, and then turn them right side out through their openings.

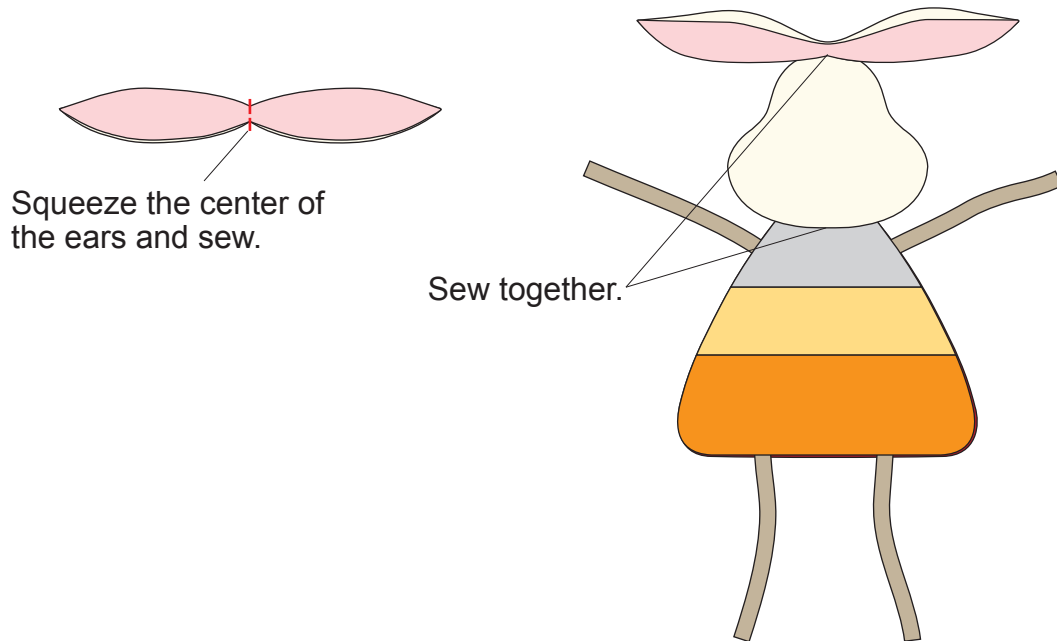


(5) Sew together B-1 through B-4, as shown below.

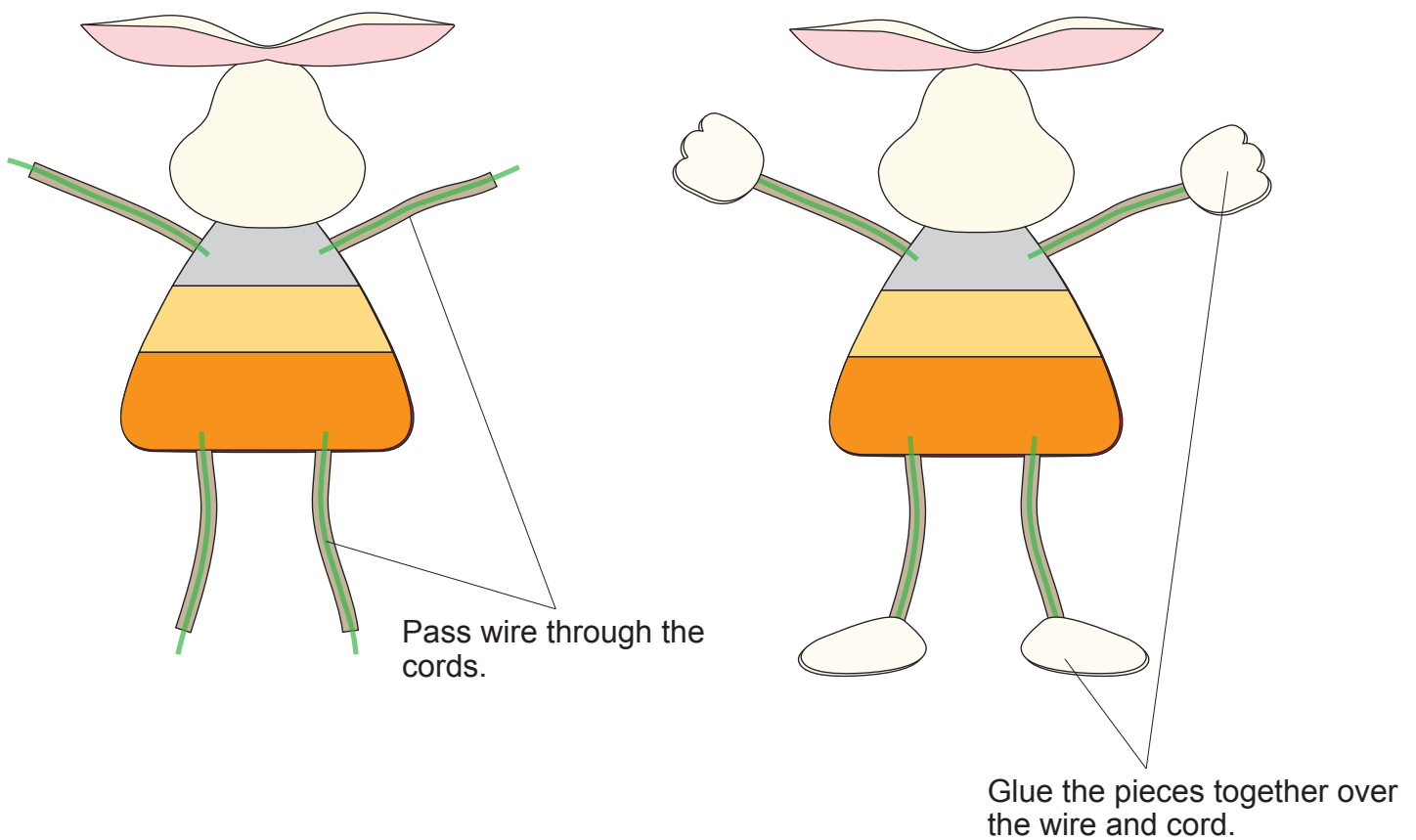


(6) Stuff the head and body with fiberfill, and then sew the openings closed.

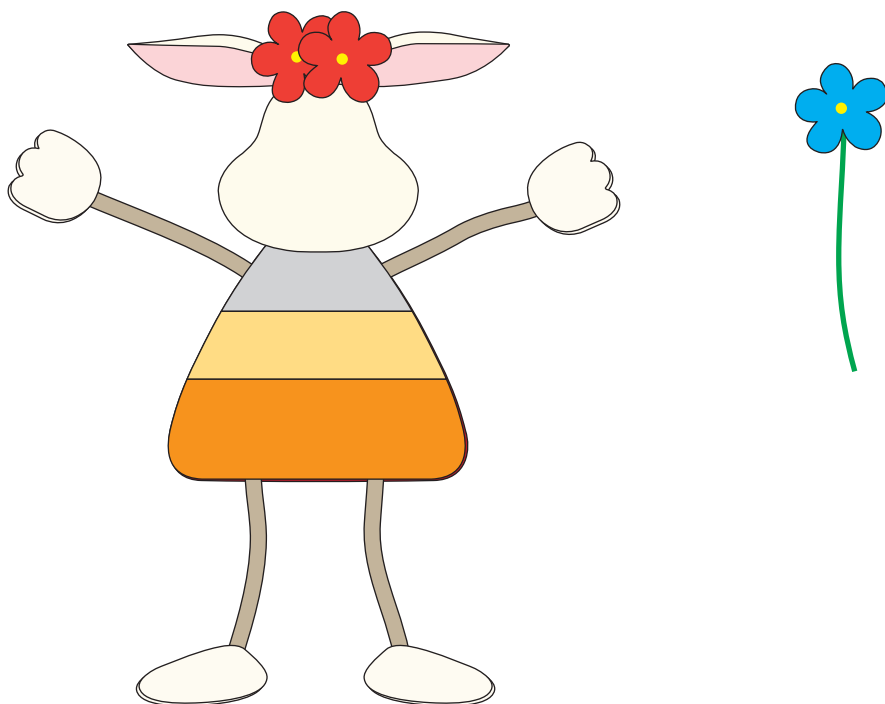
(7) Sew together the ears, head and body.



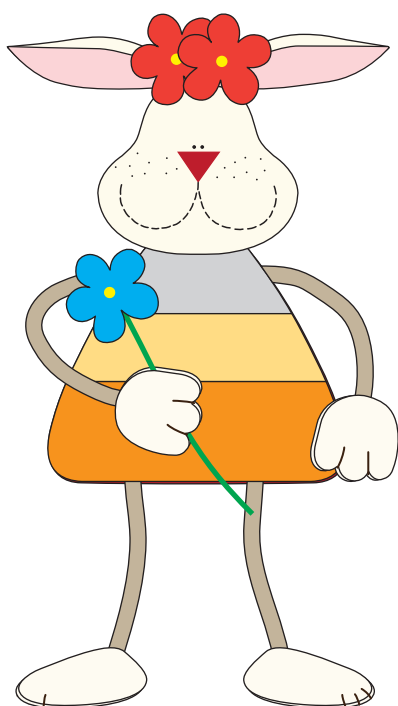
(8) Pass wire through the cords, and then attach the hands and feet at the ends.



(9) Sew felt flowers between the ears, as shown below, and then attach beads at the center of each flower. Attach a wire and bead to the remaining flower.



(10) Draw the face with a pen or by embroidering, and then embroider the fingers and toes. Attach the flower to the hand, and then bend the arms and legs.



[Sample face (actual size)]

