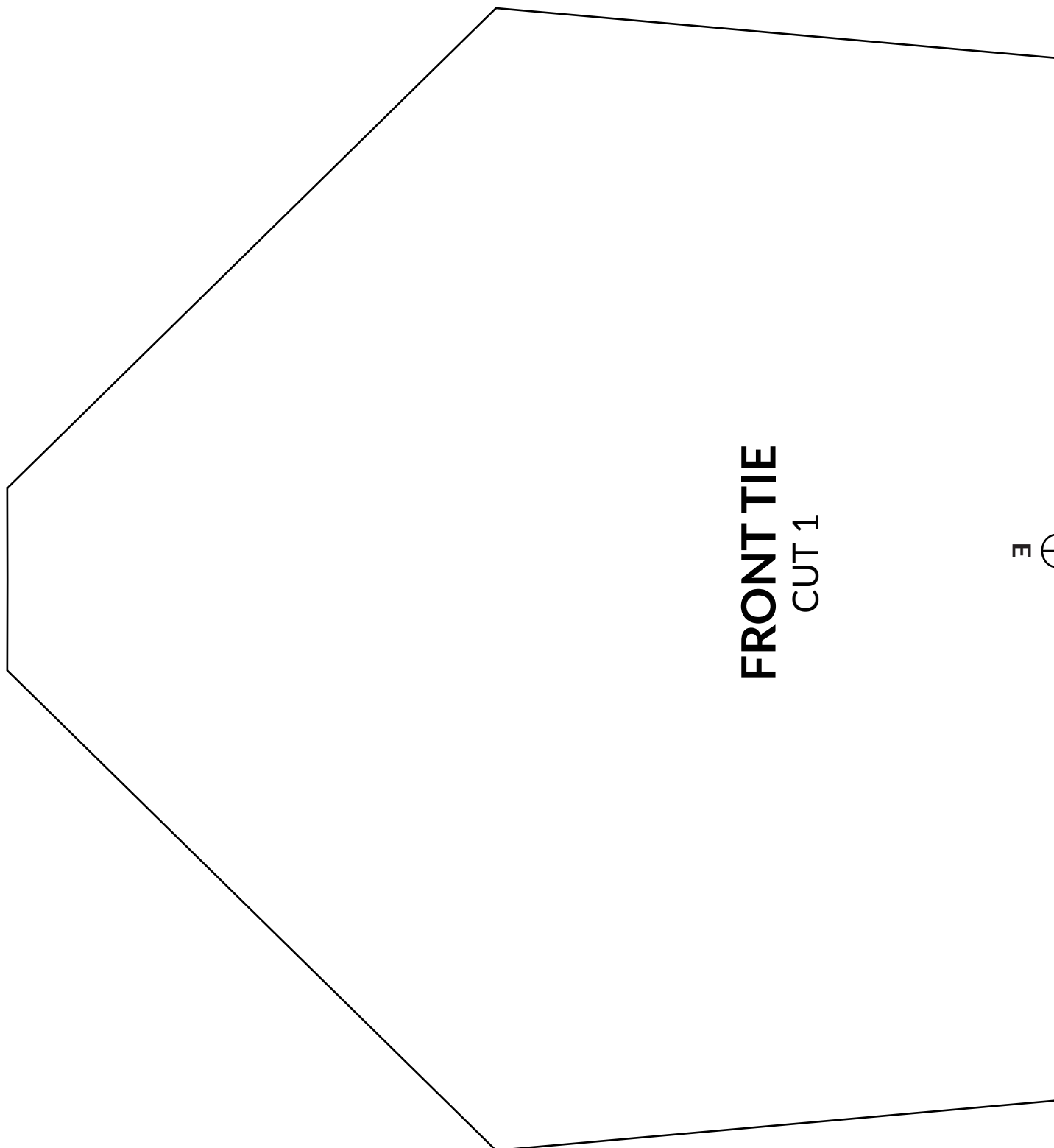


NECK TIE SEWING PATTERN

2cm
Square



E

FRONT TIE
CUT 1

D

D

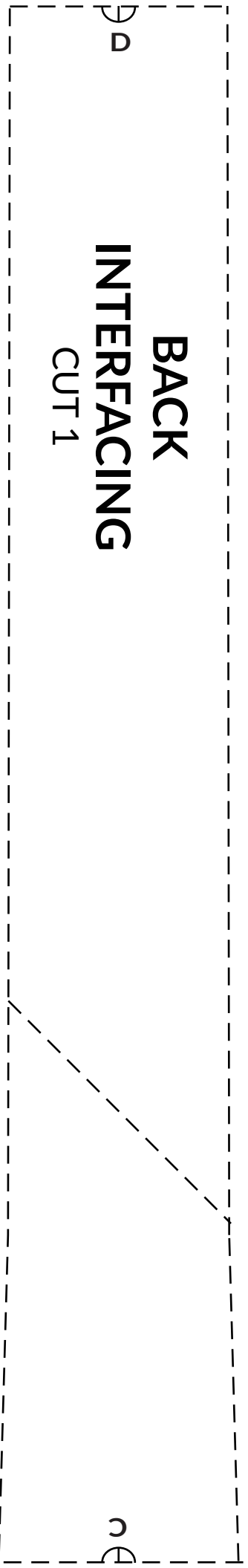
FRONT TIE
CUT 1

C

**BACK
INTERFACING
CUT 1**

B

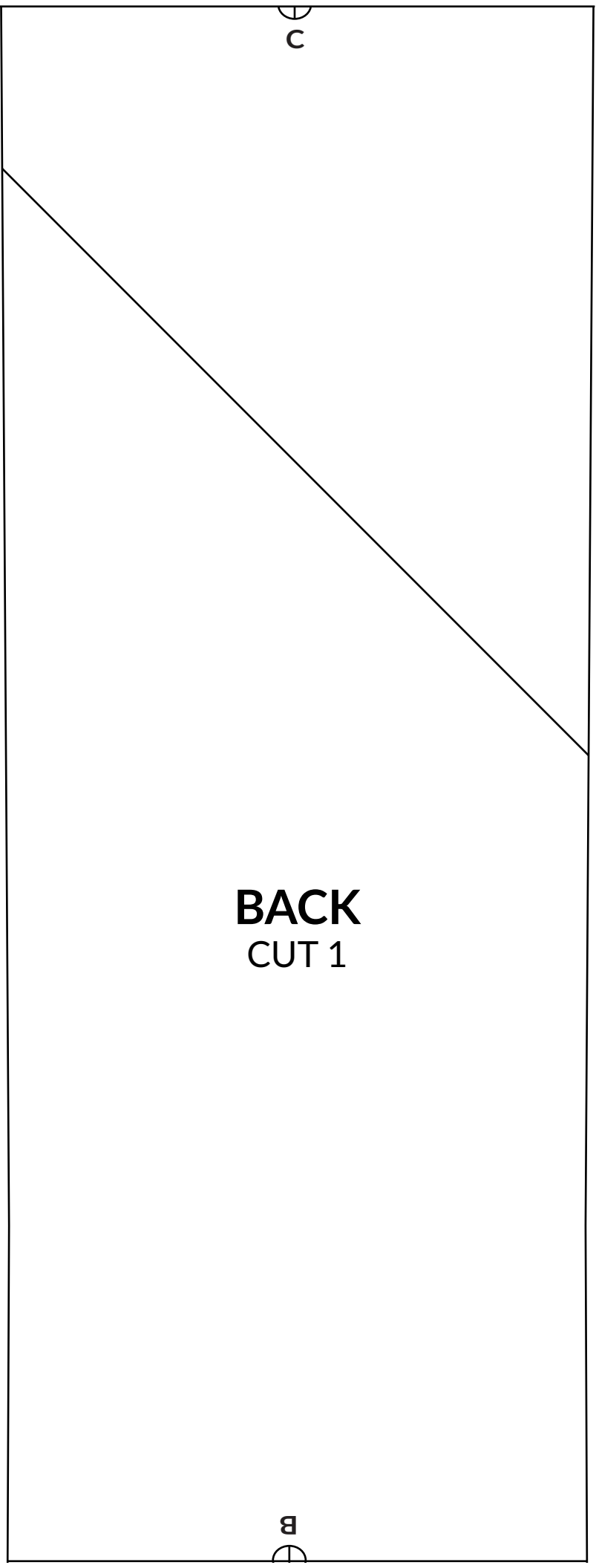
C



**BACK
CUT 1**

B

C



BACK
CUT 1

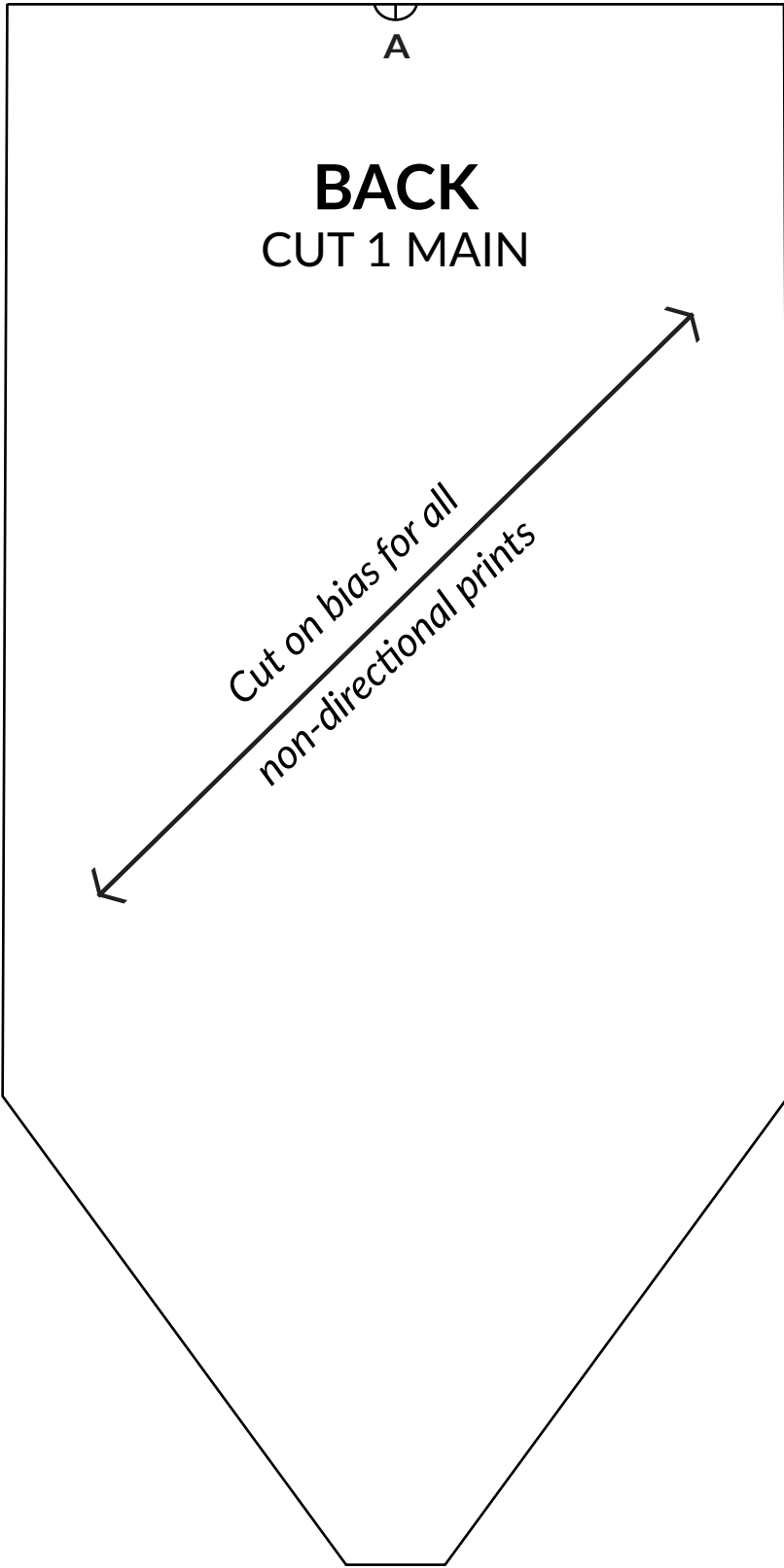
B

A

FRONT
INTERFACING
CUT 1

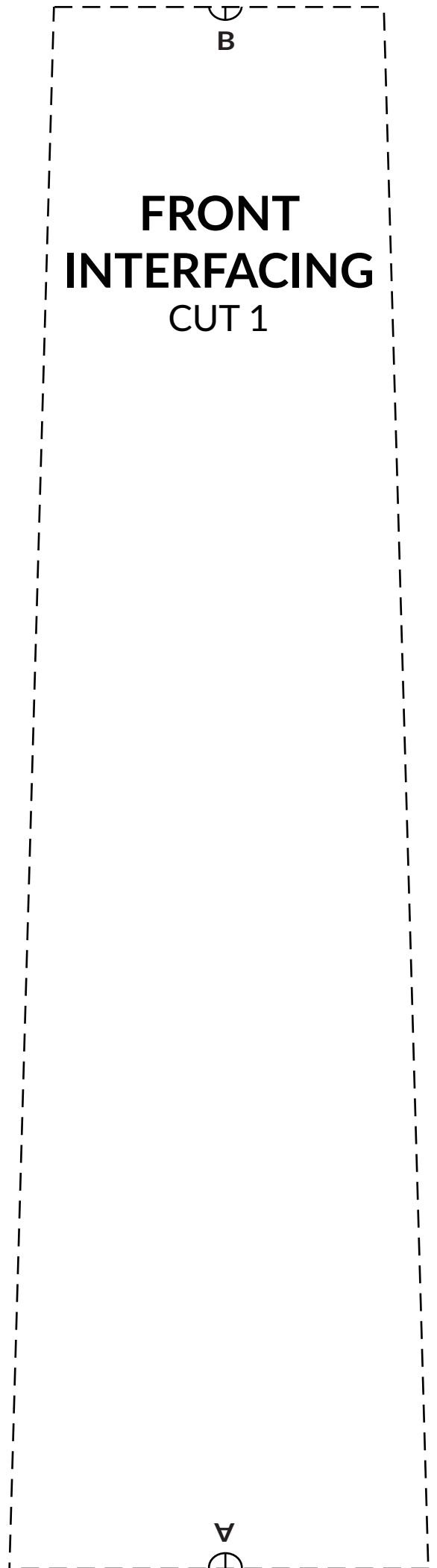
C

B

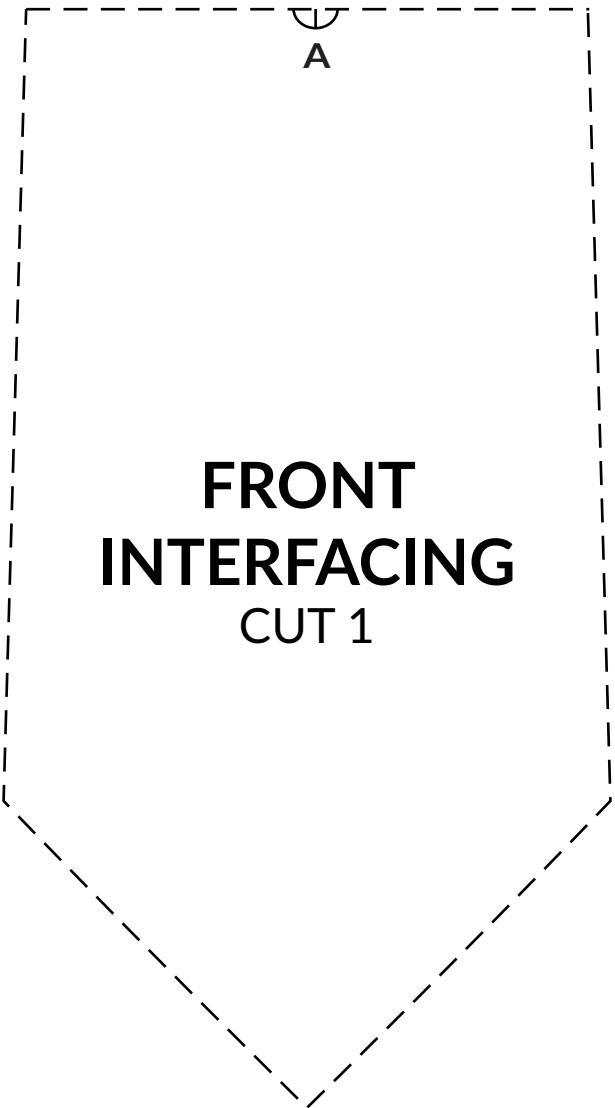
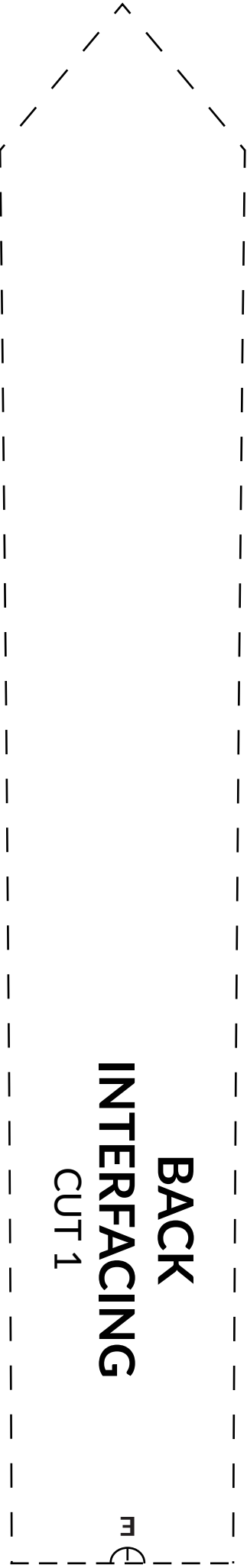
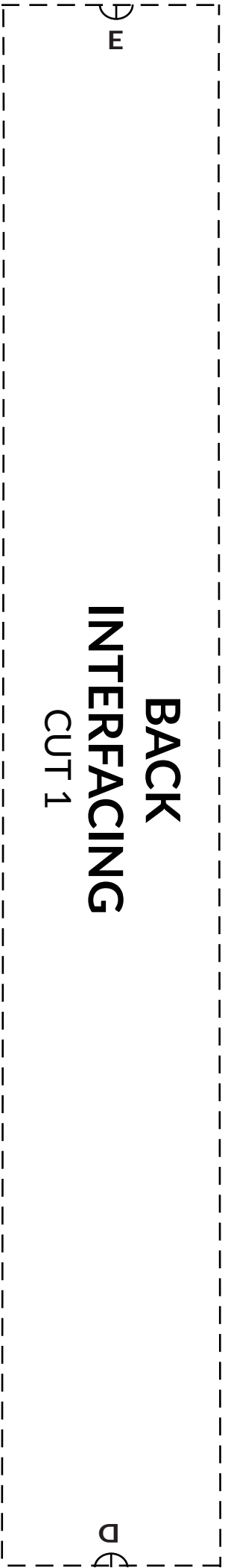


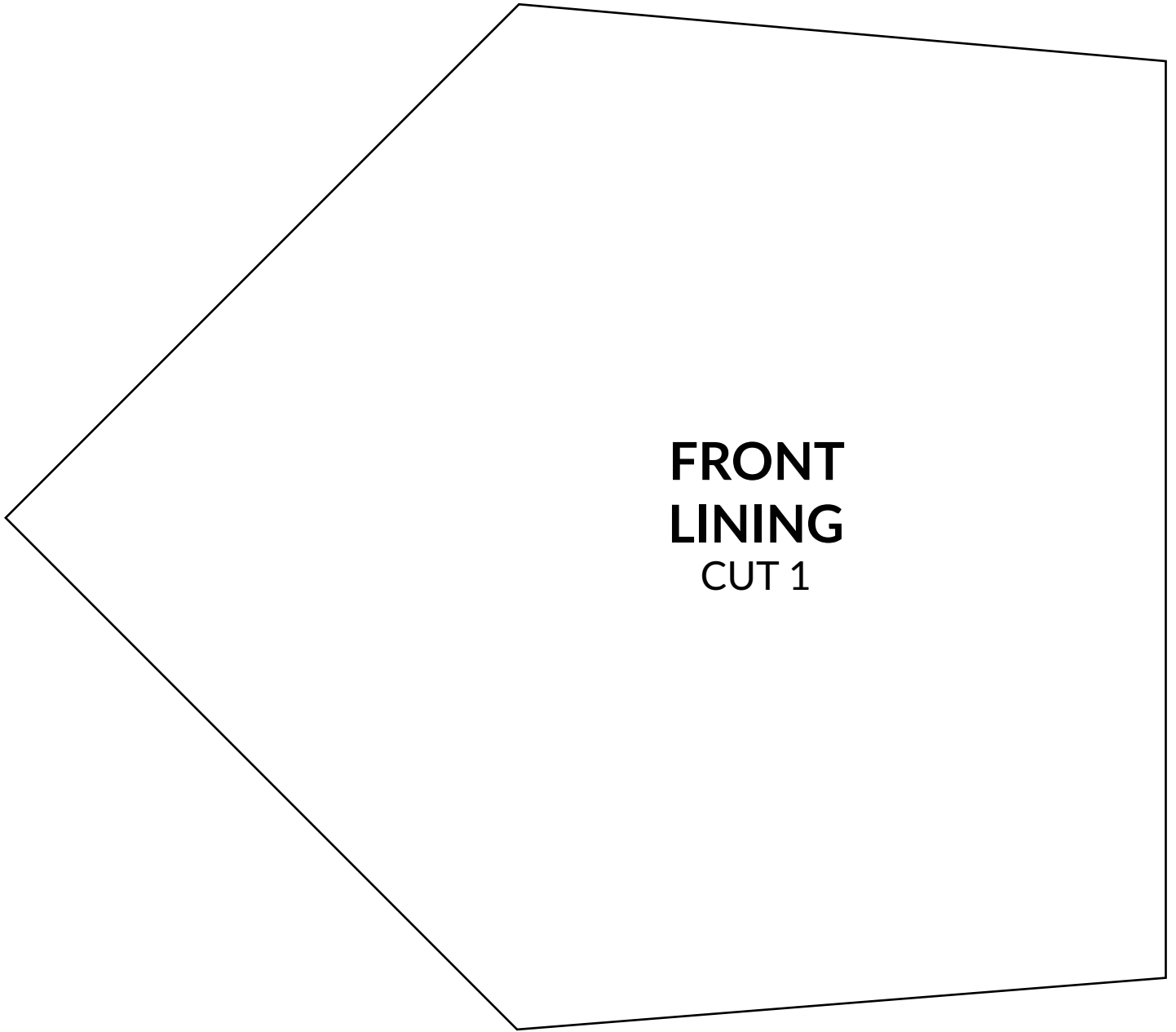
BACK
CUT 1 MAIN

Cut on bias for all
non-directional prints

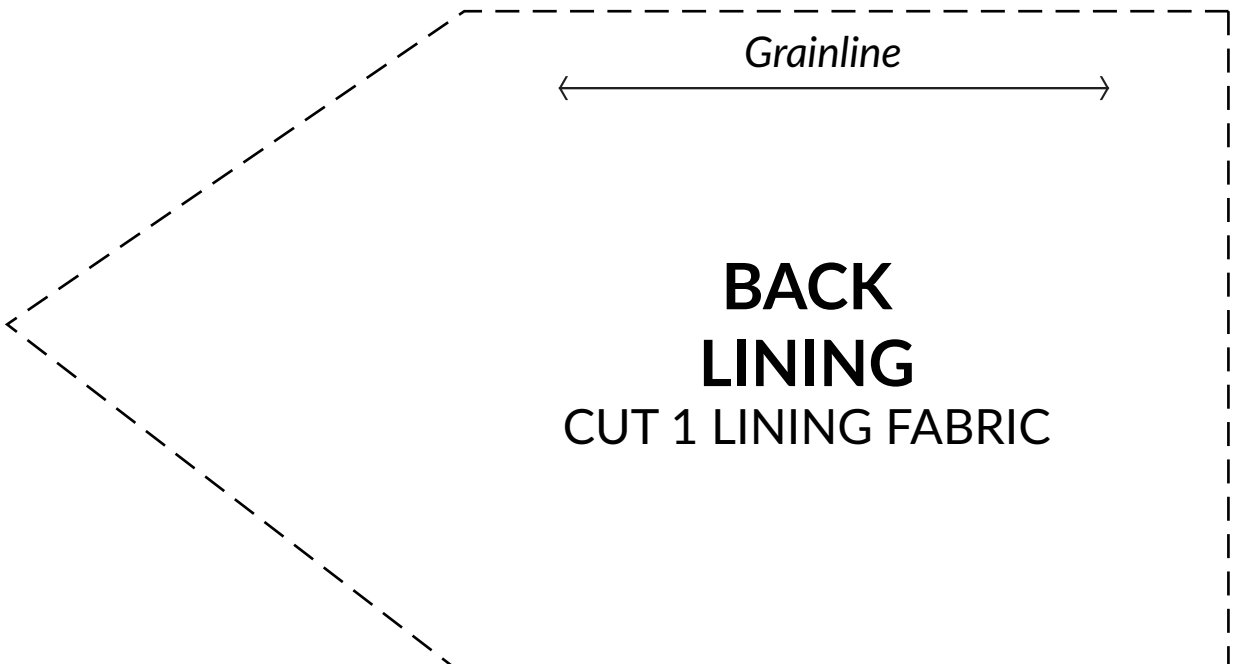


FRONT
INTERFACING
CUT 1





**FRONT
LINING
CUT 1**



Grainline

**BACK
LINING
CUT 1 LINING FABRIC**