

# **EN** Rhinestone Starter Kit

## Important Safety Instructions

### **⚠ WARNING**

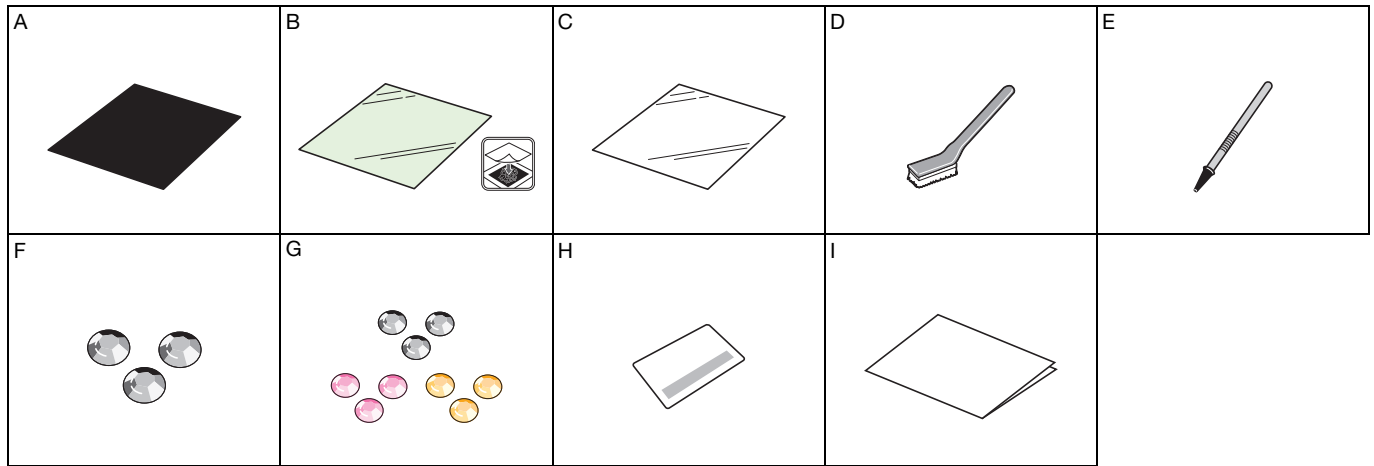
- Choking Hazard. This kit contains many small parts. This kit is not intended for use by children of any age. Keep product out of the reach of children.
- Do not touch the transfer sheet or rhinestones immediately after ironing, otherwise injury may result.

## Precautions

- For detailed instructions on using the cutting machine, refer to the Operation Manual supplied with it.
- Do not fold or bend the template sheet, transfer sheet or backing board.
- When washing fabric with rhinestones attached, turn the garment inside out before washing. For best results, hand wash and line dry. When using a washing machine, be sure to use a laundry wash bag. In addition, do not use a clothes dryer.
- Depending on the material and adhesive properties as well as the conditions of use, rhinestones may peel off from fabric.
- Do not store in a location exposed to direct sunlight, high temperatures or high humidity.
- The contents of this document are subject to change without notice.
- The screens in this manual are for illustration purposes only and may differ from the actual screens.

## Accessories

After purchasing this kit, check the contents of the box. Store the accessories in the box.



Name	
A	Template sheet *1 (black) 12" x 12"(305 mm x 305 mm)
B	Transfer sheet *1 12" x 12"(305 mm x 305 mm)
C	Backing board (reusable) (white) 12" x 12"(305 mm x 305 mm)
D	Positioning brush
E	Rhinestone pick-up tool
F	Hot fix rhinestones *2, SS20 (4.6 - 4.8 mm): clear approx.50
G	Hot fix rhinestones *2, SS10 (2.8 - 2.9 mm): clear approx.800, pink approx.300, yellow approx.300
H	Activation card for CanvasWorkspace rhinestone function
I	Insertion

\*1 These accessories are consumables. After you have used them all, purchase CARSSH1 (set containing template sheets and transfer sheets) or CARSTS1 (transfer sheets). To purchase options, contact the retailer where this kit was purchased.

\*2 Commercially available rhinestones can be used. When purchasing rhinestones, be sure to select the "Hot fix" type. Other types cannot be used. Some rhinestones of the "Hot fix" type cannot be used.

# Activating the Rhinestone Function on CanvasWorkspace

Use CanvasWorkspace to prepare a pattern for rhinestones. CanvasWorkspace has a large variety of rhinestone patterns that can be used immediately. In addition, you can create original rhinestone patterns.

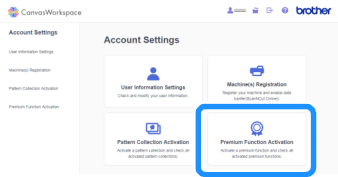
**1 From a computer, log in to CanvasWorkspace.**  
(<http://CanvasWorkspace.Brother.com>)

- New users should create a free account.

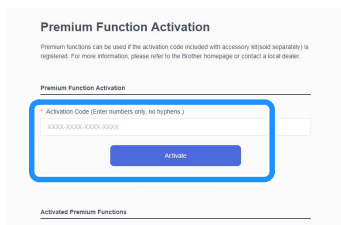
**2 Click  in the upper-right corner of the Web page.**



**3 Click <Premium Function Activation>.**

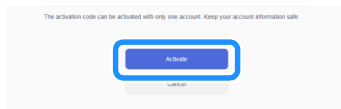


**4 Type in the activation code on the included card for activation code, and then click <Activate>.**




- Scratch off the silver part of the card and reveal the activation code.
- The uppercase letters "O" and "I" are not used in the activation code.
- The activation code is valid for only one login ID for CanvasWorkspace. The same activation code cannot be used again.

**5 Check the content on the activation confirmation screen, and if there are no problems, click <Activate>.**



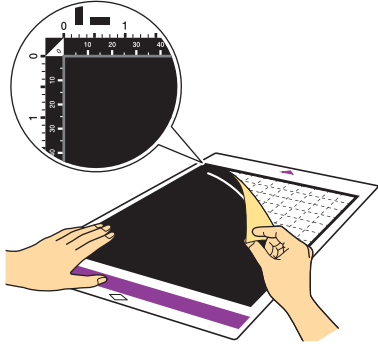
- ▶ Click <OK>, and the activation is complete.

## Using the Rhinestone Function

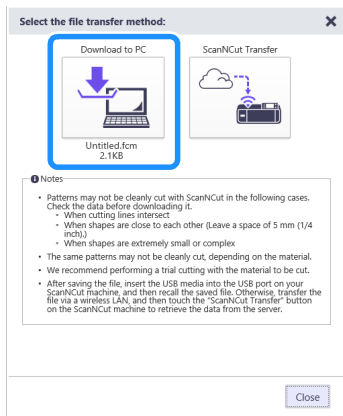
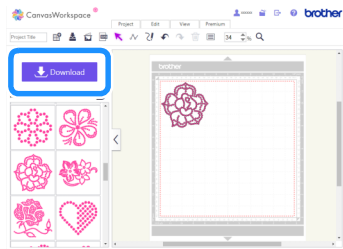
After activating the Rhinestone function, display details on using the function by clicking  at the top of the Web page, then selecting the Help for the Rhinestone function.

Download a rhinestone pattern from CanvasWorkspace, retrieve it to the machine, and cut the pattern.

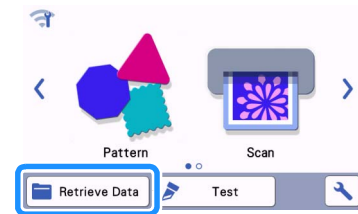
- 1 With the backing facing down, attach the template sheet to a standard tack adhesive mat, and insert the mat into the machine.



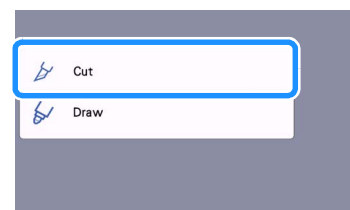
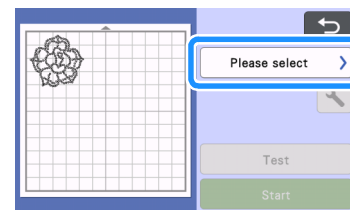
- 2 Download the rhinestone pattern from CanvasWorkspace.



- 3 Retrieve the pattern on the machine.

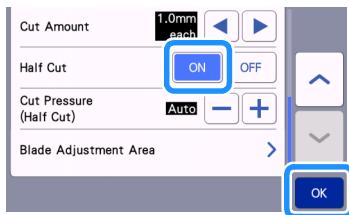
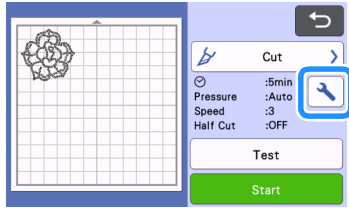


- 4 Select "Cut" on the preview screen.

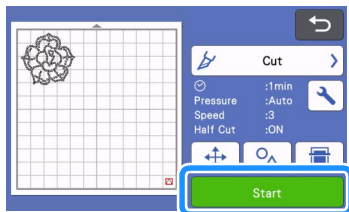
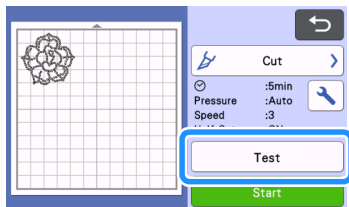


**5** Touch  on the pattern editing screen, and set Half Cut to ON.

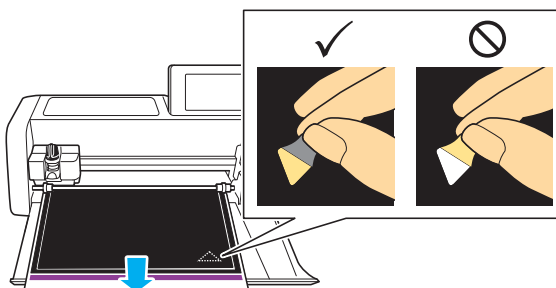
- Half Cut feature is only available auto-blade holder is installed.



**6** Touch the "Test" key, and cut a trial cutting pattern with the Auto Blade (Black Holder).

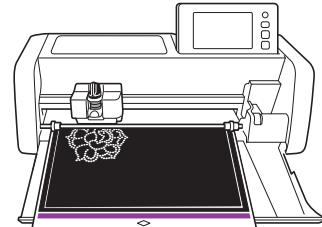
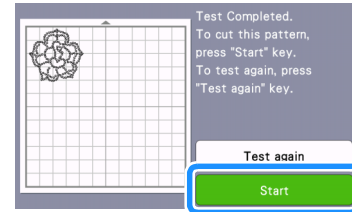


**7** If the backing of the template sheet is cut, adjust the Cut Pressure(Half Cut) to lower it.



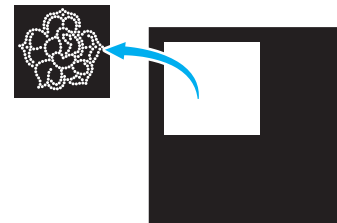
**8** If the trial cutting of the pattern was cut properly, touch the "Start" key and cut the rhinestone pattern.

- The rollers may leave marks in the template sheet, but this should not affect its quality.



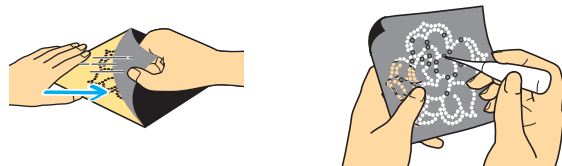
**9** When the cutting of the rhinestone pattern is complete, feed out the mat and peel off the template.

- Cut the template sheet along an outline slightly larger than the pattern.

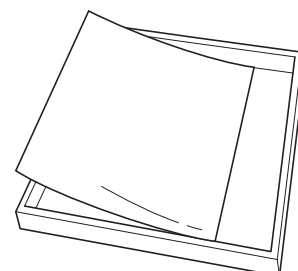


**10** Place the template sheet on a flat surface with the backing down, and then quickly peel the template sheet off horizontally.

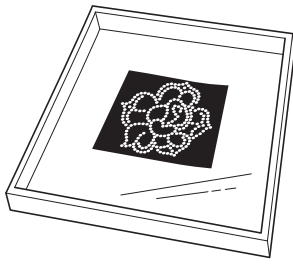
- ▶ The template sheet cutouts remain attached to the backing.
- If all template sheet cutouts do not remain attached to the backing, use a pointed object, such as an awl, to punch out each rhinestone hole from the back of the template sheet.
- Do not punch out the holes from the front side, otherwise the adhesive side may become attached to itself.



**11** With the shiny side facing up, place the backing board inside the box of this kit.

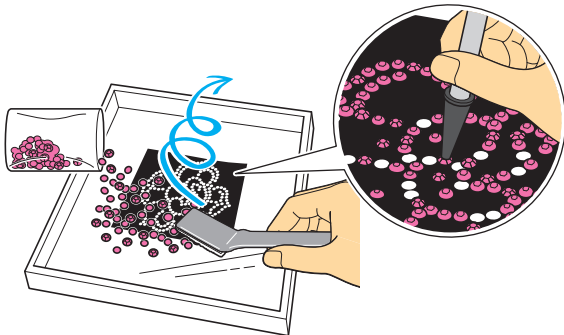


**12** Attach the template sheet cut to the backing board.



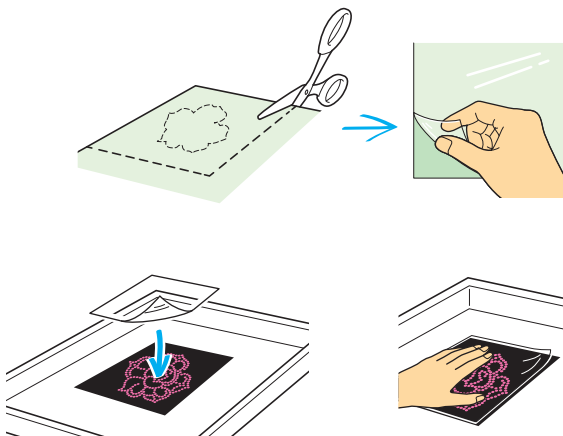
**13** Pour slightly more rhinestones than necessary on top of the pattern, and then use the positioning brush to position them in the holes.

- Gently move the brush in a circular motion.
- If it is difficult to position the rhinestones in the holes with the brush, use the rhinestone pick-up tool. Press the end of the rhinestone pick-up tool straight down onto a rhinestone, and then pick up the rhinestone and place it into the hole. Slide the rhinestone pick-up tool off to the side to release the rhinestone.
- Before using the rhinestone pick-up tool, check that the silicone part is pushed into the tool. It may be difficult to pick up the rhinestones if the silicone part is dirty. Wipe off any dust with a dry cloth.
- When positioning rhinestones larger than SS10 into holes, place them into position one at a time.
- With patterns using both SS10 and SS20 rhinestones, position the SS10 rhinestones first.

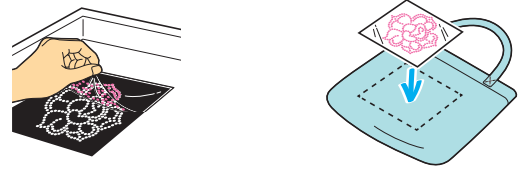


**14** After all pattern holes have been filled with rhinestones, cut the transfer sheet slightly larger than the pattern, peel off the backing, and then attach the transfer sheet to the top of the rhinestones.

- Use your hands to firmly press down on the transfer sheet so that it is affixed to all rhinestones.

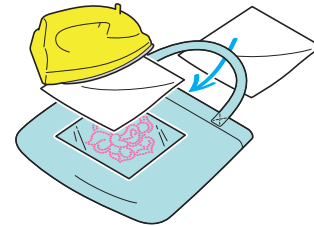


**15** While checking that the rhinestones are attached to the transfer sheet, slowly peel the transfer sheet from the template sheet. Then, place the transfer sheet with the rhinestones attached on the fabric to be decorated.



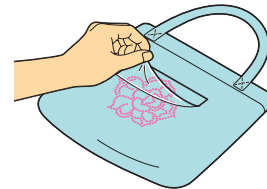
**16** Place fabric underneath and on top of the fabric with the transfer sheet attached, and then use an iron on a medium temperature setting (140 to 160 °C (284 °F to 320 °F)) to press down on the top fabric for 45 to 60 seconds.

- Use ironing board with standard pressing surface. It may be easier to attach the rhinestones if cushioned fabric is placed underneath.



**17** After ironing, remove the fabric that was placed underneath and on top, and then, while checking that the rhinestones are attached to the fabric, slowly peel off the transfer sheet.

- Before peeling off the transfer sheet, make sure that it has cooled.
- If the rhinestones are poorly adhering after the transfer sheet has been peeled off, re-place the fabric underneath and on top, and then press down on the pattern again with an iron.



#### Note

- When storing a template sheet with rhinestone holes cut out, store it with its backing attached to the adhesive side. Use the spatula to remove template sheet cutouts remaining on the backing.