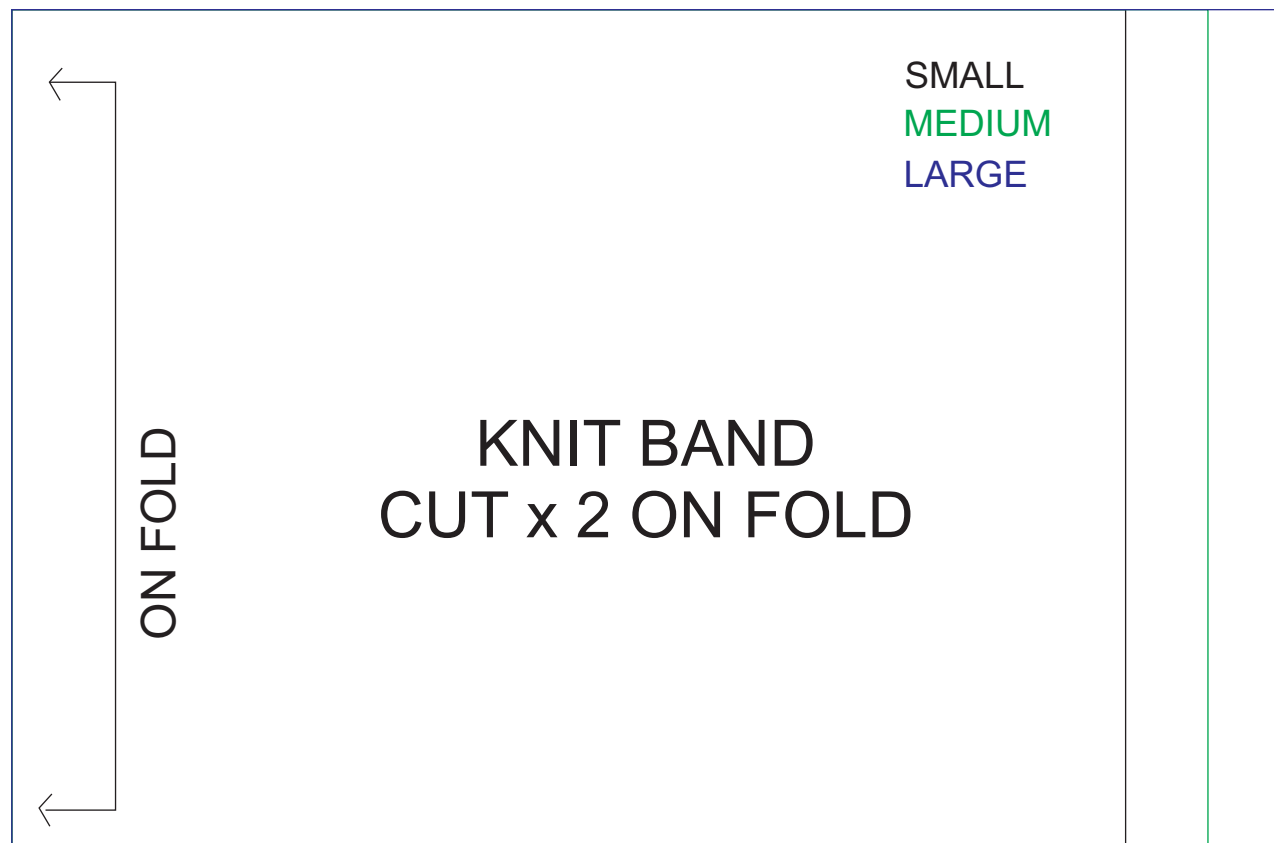
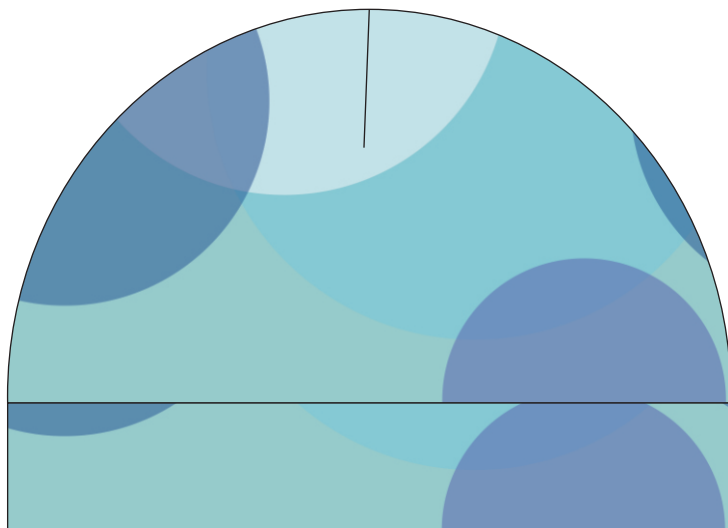
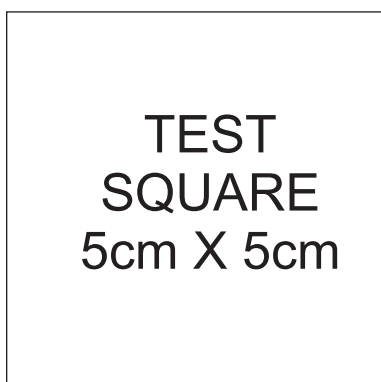


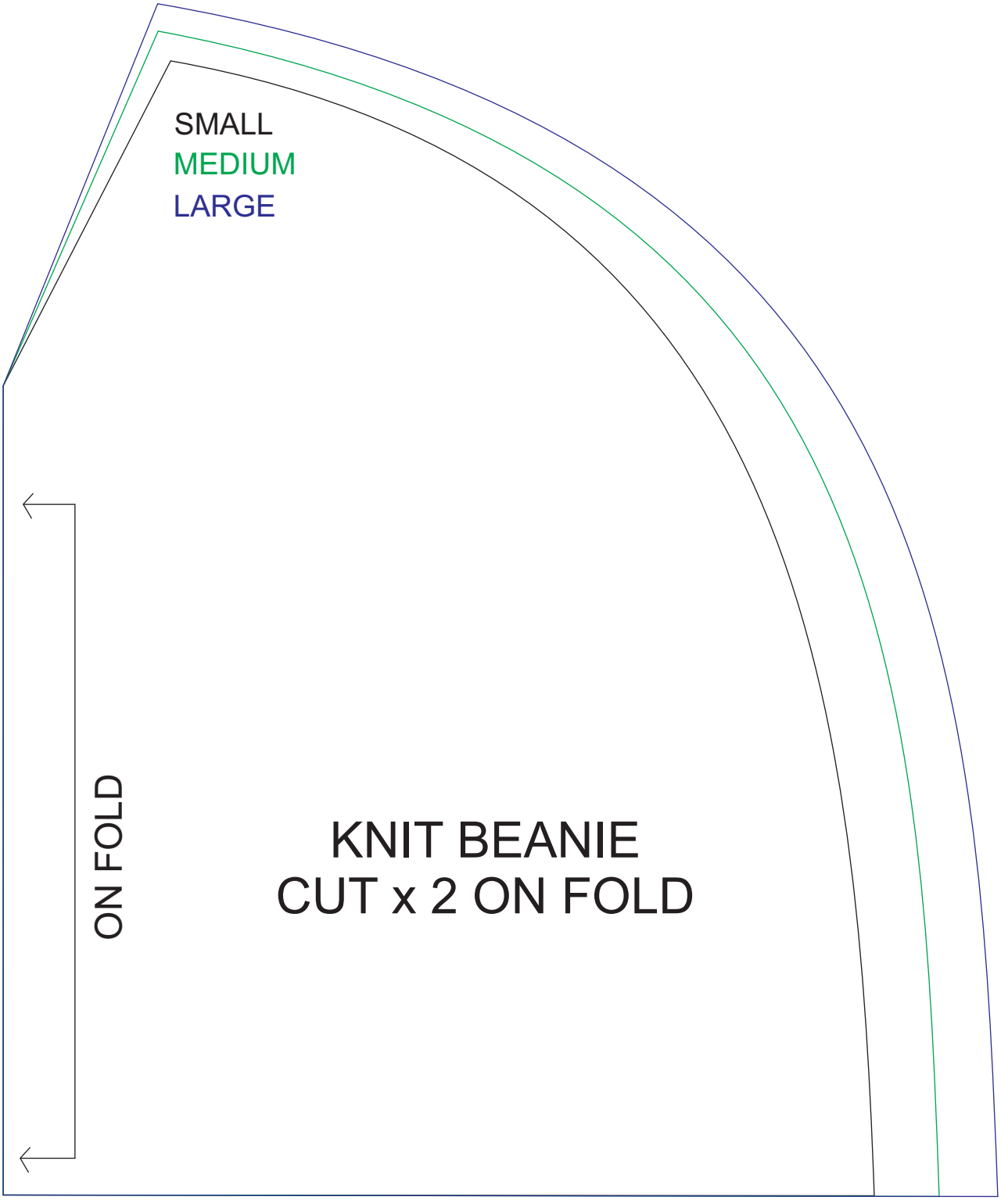
KNIT BEANIE SEWING PATTERN

Material:

Mitten: Knit, sweatshirt or fleece

Band: Ribbed knit



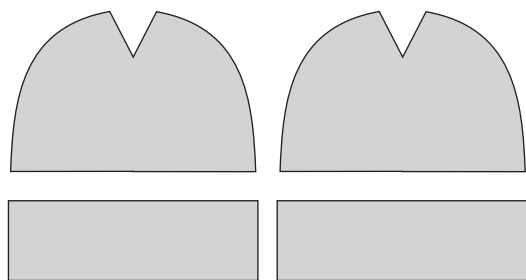


SMALL
MEDIUM
LARGE

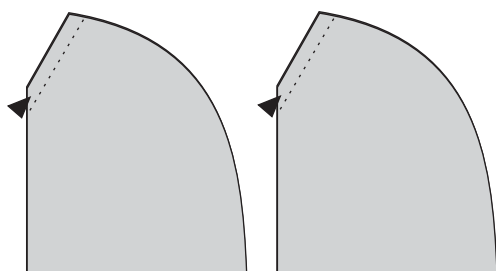
ON FOLD

KNIT BEANIE
CUT x 2 ON FOLD

SEWING INSTRUCTIONS

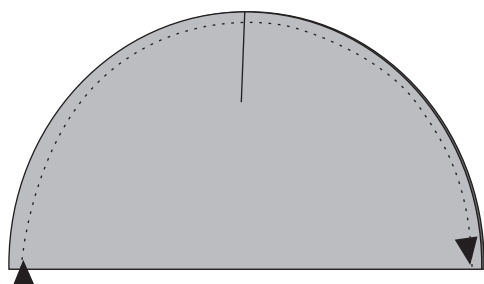


1. Cut out your fabric pieces including 2 beanie pieces and 2 band pieces. Start with the beanie.



2. Fold your beanie piece over and stitch along the top cornered edge. You may want to overlock this edge to ensure it doesn't fray.

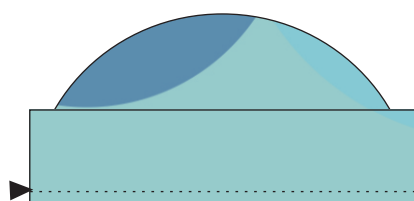
3. Repeat for the second beanie piece.



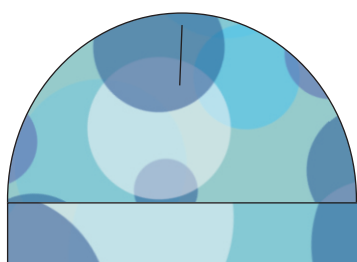
4. With right sides together pin and then stitch 1/4" around the curved edge.



5. Pin together the band, right sides facing. Stitch 1/4" down both sides.



6. Fold the band down to the right side. Fold the beanie inside out to the right side. Place the raw edges of the beanie bottom and band together and stitch 1/4" along the band. Overlock this edge so that it doesn't fray.



7. Fold the band down and iron the edges flat to complete your beanie.